

Little Donkey

Eric Boswell (1959)
arr. Peter Owens (b. 1960)

Poco andante

p Lit-tle don - key, lit-tle don - key, -
p on the dus - ty road, Got to keep on plod-ding on - wards
mp Been a long time,
with your pre - cious load. *mp* Been a long time, lit-tle don - key,
thro' the win - - - ter's night. *cresc.* Don't give
thro' the win - ter's night. *cresc.* Don't give up now,

16 up now, end's in sight. *mf*
 lit-tle don - key, Beth-le-hem's in sight. Ring out those—

20 bells to-night, Beth-le - hem, Beth-le - hem, Fol - low that star to-night,—

25 *p* Lit - tle Don - key,
 Beth - le - hem,— Beth - le - hem.— Lit-tle don - key, lit-tle don - key,
 Lit - - - tle don - key, had a -
 Lit-tle don - key, lit-tle don - key,

29 hea - vy day.—
 had a hea - vy day.— Lit-tle don - key, car-ry Ma - ry—
 had a hea - vy day.— Car - - - ry Ma - - - ry

33 *p* Mmm, mmm,

safe-ly on her way, Lit - tle don-key, lit-tle don-key, jour-ney's end is

on her way. Mmm, mmm,

38 ooh, aah

near. There are wise men wait-ing for a star to bring them here.

ooh, aah

43 *mp*

S Do not fal - ter, lit-tle don - key, there's a star a - head. O—

A *mp* Do not fal - ter lit - tle don - key, there's a star, a star, a-head.

T *mp* Do not fal - ter, there's a star a - head. O

B *mp* Do not fal - ter, lit-tle don - key, there's a star a - head. O

47 *cresc.*

S it will guide you, lit-tle don - key, to a cat - tle shed.

A It will guide you, lit - tle don - key, to a cat - tle shed.

T it will guide you, lit-tle don - key, to a cat - tle shed.

B it will guide you, lit - tle don - key, to a cat - tle shed.

51 *f*

Ring out those bells to-night, Beth - le - hem, Beth - le - hem,

55

Fol - low that star to-night, Beth - le - hem, Beth - le - hem.

59 *mf*

Lit-tle don - key, lit-tle don - key, had a hea - vy day.

63

Car - - - ry Ma - - - ry on her
Lit-tle don - - key, car-ry Ma - - - ry safe-ly on her

66 **Rit.**

way,
way, safe - ly on her way.

Little Donkey

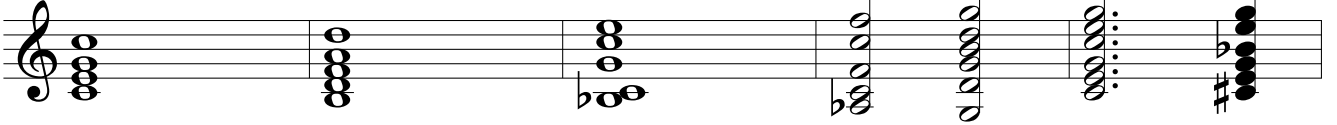
Hand

Bells: G-g' (chromatic)

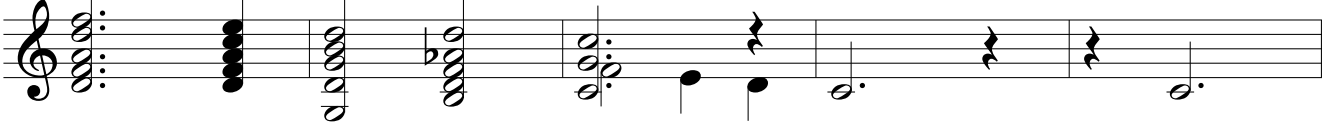
Eric Boswell
arr. Peter Owens

The musical score for 'Little Donkey' is written for a handbell instrument in 4/4 time. It consists of ten staves of music, each starting with a measure number: 1, 4, 7, 10, 13, 16, 19, 23, 27, and 31. The notation includes treble clefs, stems, beams, and various note values (quarter, eighth, and sixteenth notes). The key signature changes from one flat (B-flat) to two flats (B-flat and E-flat) at measure 10. The score features a mix of melodic lines and chords, with some measures containing rests. The piece concludes with a final measure in measure 31.

35



40



45



51



54



57



60



63



65



68

